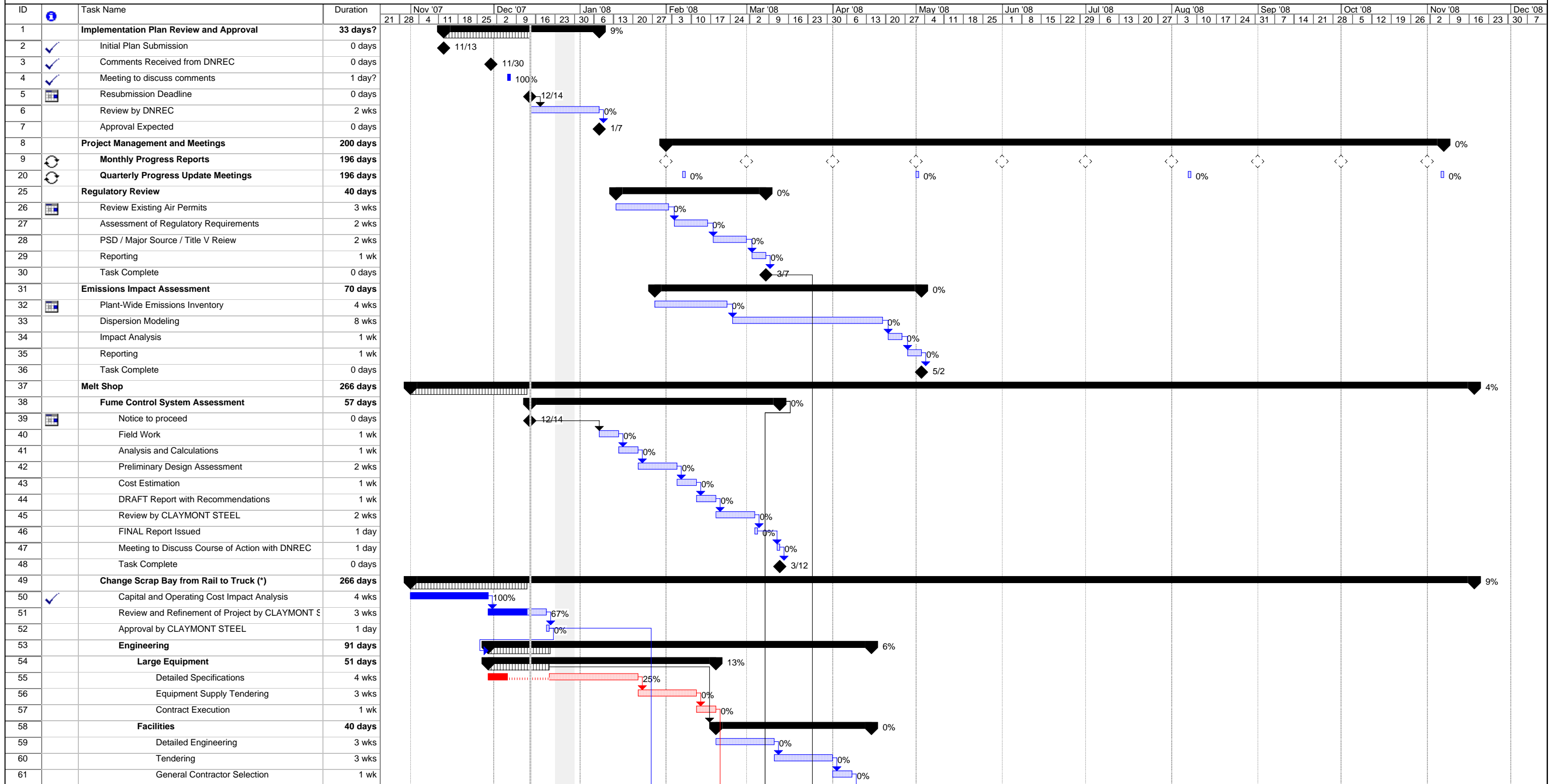


**Claymont Steel
Implementation Plan
Dust Control Projects**

Revision 1
December 14, 2007



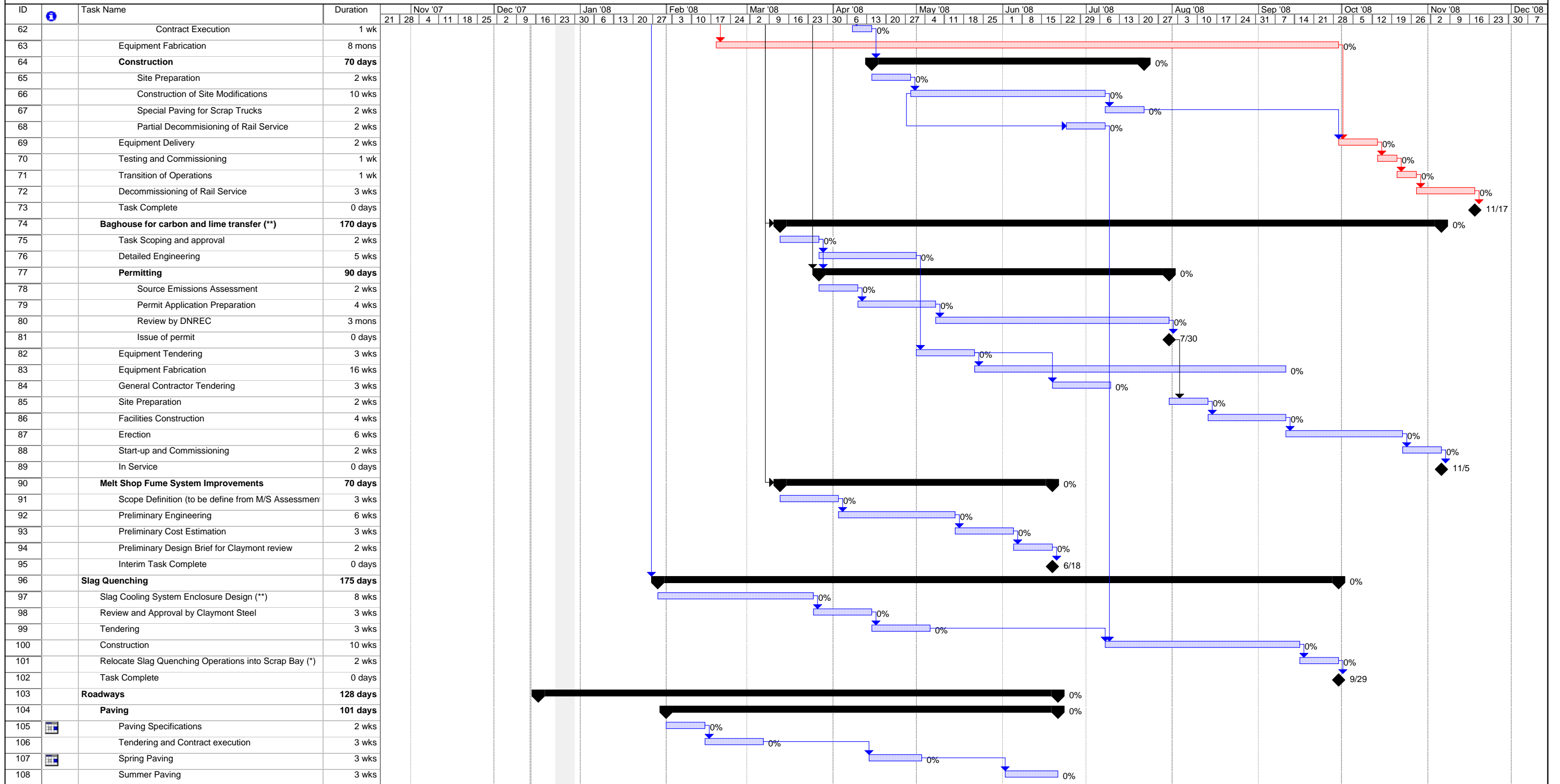
Earth Tech Inc.
Printed: Dec 14 '07

Critical		Task		Baseline		Milestone		Project Summary		Deadline	
Critical Split		Split		Baseline Split		Summary Progress		External Tasks			
Critical Progress		Task Progress		Baseline Milestone		Summary		External Milestone			

Notes:
(*) - Subject to approval of "Rubber Tire" project by Claymont Steel
(**) - Subject to outcome of melt Shop Fume System Assessment
ET PN: 98250

**Claymont Steel
Implementation Plan
Dust Control Projects**

Revision 1
December 14, 2007



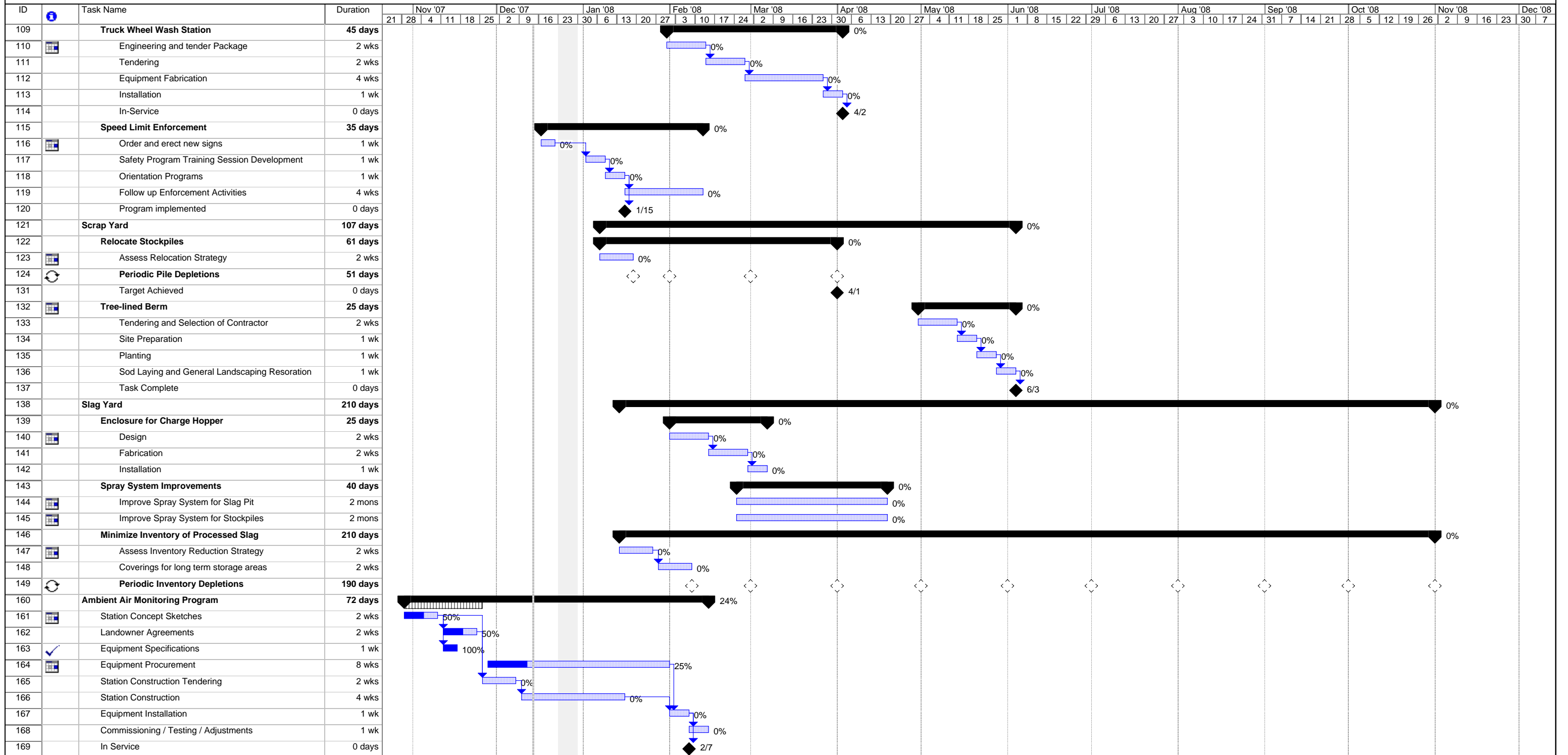
Earth Tech Inc.
Printed: Dec 14 '07

Critical		Task		Baseline		Milestone		Project Summary		Deadline	
Critical Split		Split		Baseline Split		Summary Progress		External Tasks			
Critical Progress		Task Progress		Baseline Milestone		Summary		External Milestone			

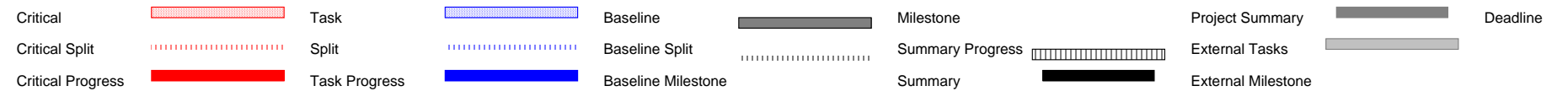
Notes:
(*) - Subject to approval of "Rubber Tire" project by Claymont Steel
(**) - Subject to outcome of melt Shop Fume System Assessment

**Claymont Steel
Implementation Plan
Dust Control Projects**

Revision 1
December 14, 2007



Earth Tech Inc.
Printed: Dec 14 '07



Notes:
 (*) - Subject to approval of "Rubber Tire" project by Claymont Steel
 (***) - Subject to outcome of melt Shop Fume System Assessment
 ET PN: 98250